

High Performance Homogeneous Vinyl Flooring

Mipolam Esprit 500 is a flexible, homogeneous, calendared, compacted floorcovering available in tile and sheet formats. The product is antistatic and has a non directional multi-tonal design incorporating coloured chips which are dyed prior to being added to the raw mixture to ensure an even colour throughout the thickness of the product. Uniquely treated with **PUR Protect®**, the product has excellent cleaning characteristics and does not require the application of acrylic polishes.

Mipolam Esprit 500 is anti-bacterial and fungicidal.

Hard wearing, the flooring complies with EN 649 (34-43) and has a group P wear rating. It is suitable for heavy duty traffic areas.

This product is suitable for use with alcohol based cleaning fluids found in cleanrooms.

INSTALLATION

Installation should be carried out in accordance with local standards. Subfloor to be smooth, hard, clean and dry prior to laying. Where applicable the subfloor must incorporate an effective Damp Proof Membrane. The material must be allowed to acclimatise for 24 hours before installation in a room temperature of between 18-24°C. All seams must be heat welded using matching welding rod.

MAINTENANCE

No emulsion dressing is required. Maintenance should be carried out regularly to retain the appearance and durability of the floor. The floorcovering should be maintained with regular sweeping and damp mopping using a neutral cleanser, more intense cleaning should be carried out using a floor machine fitted with a medium pad in conjunction with a spray maintainer.

DESCRIPTION			
Total thickness	EN 428	mm	2
Weight	EN 430	g/m ²	2900
Width of sheet	EN 426	cm	200
Length of sheet	EN 426	lm	20
Tile size / No. of tiles per package		mm / nos	608 x 608 / 20
CLASSIFICATION			
Standard classification	-	-	EN649
European classification	EN 685	class	34-43
K rating	-	class	K5
Fire rating	EN 13 501-1	class	Bf1-S1
Slip resistance dry	EN 13 893	class	DS
Slip resistance wet	DIN 51 130	class	R9
Static electrical propensity	EN 1815	kV	< 2
Electrical resistance	EN 1081	Ohm	≥ 10 ⁹
PERFORMANCE			
Wear group	EN 649	group	P
Wear resistance	EN 660.1	mm	0.10
Dimensional stability	EN 434	%	Sheet ≤ 0.40 / Tile ≤ 0.25
Residual indentation	EN 433	mm	≈ 0.03
Thermal conductivity	EN 12 524	W/(m.K)	0.25
Colour fastness	EN 20 105 -B02	-	≥ 6
Chemical resistance	EN 423	-	OK
Anti-bacterial and fungicidal treatment	-	-	OK
Surface treatment	-	-	PUR Protect®
CE Marking	EN 14041		



ESPRIT 500



5055 Indian Red



5035 Red Rocks



5032 Sunny



5045 Irish Coffee



5015 Cafe Creme



5004 Camel



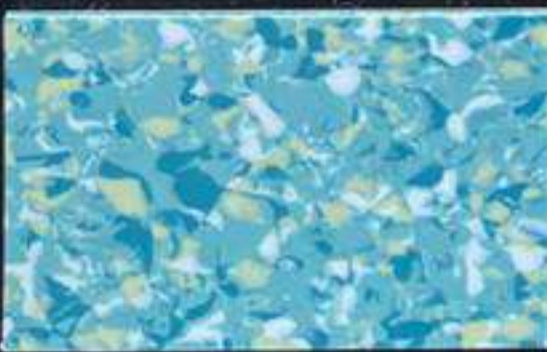
5037 Forest Green



5017 Yellow Green



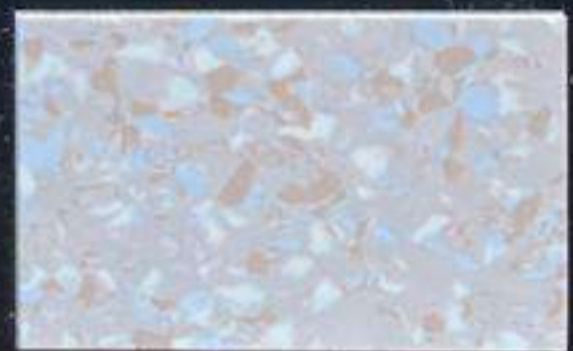
5002 Vanilla



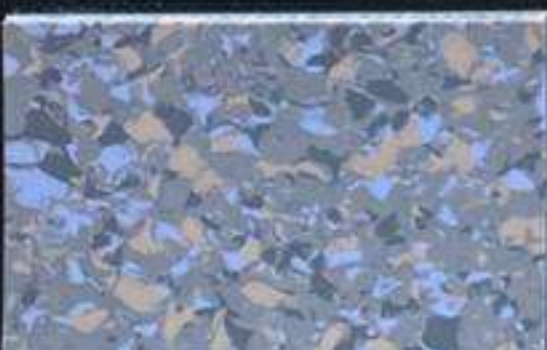
5027 Evergreen



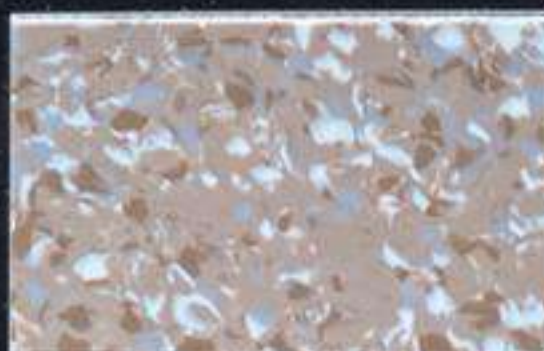
5007 Chartreuse



5031 Zephyr



5053 Moon Rock

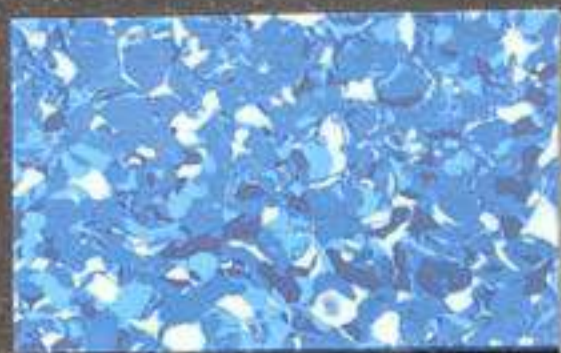


5033 Taupe

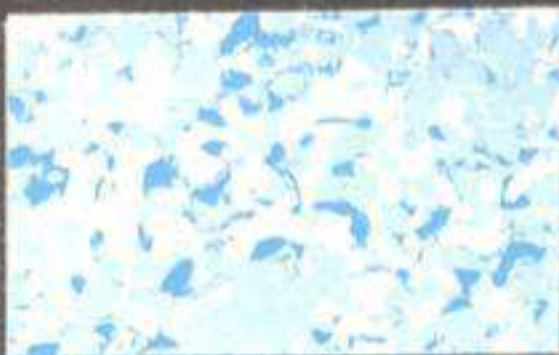


5034 Moka

ESPRIT 500



5056 Midnight Blue



5016 Baltic Blue



5041 Storm Cloud



5026 Royal Blue



5006 Sky Blue



5010 Silver Grey



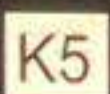
5009 Platinum



5001 Ice Crystal



5060 Graphite



PUR Protect®